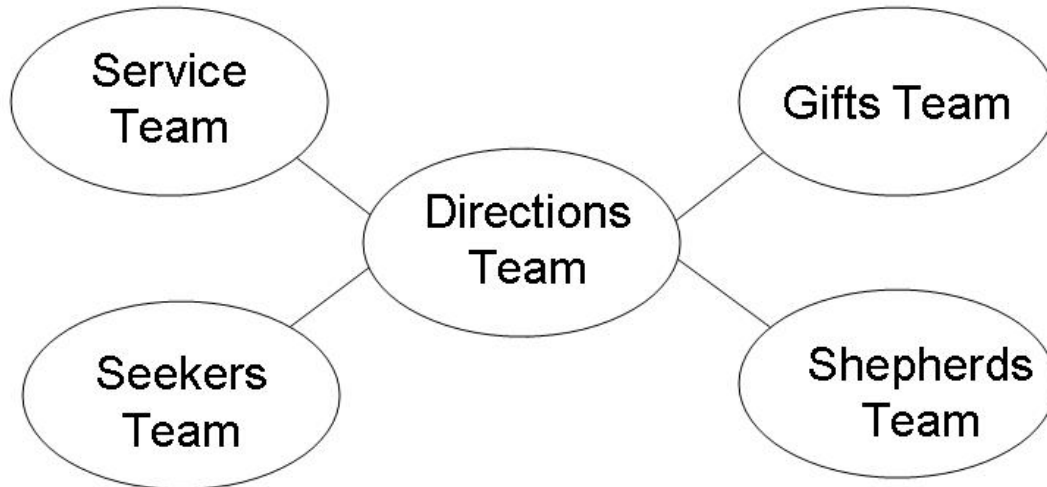


What does our current system look like?



Service Team - 2nd Wednesday

Seekers / Gifts / Shepherds Teams - 3rd Wednesday

Directions Team – 4th Wednesday

WHY DID WE CHANGE TO THIS MODEL?

WHAT ARE THE PROBLEMS WITH THIS STRUCTURE?

WHAT DID OUR STRUCTURE LOOK LIKE BEFORE?

Some comments (+ and –) we have heard...

- “We did everything as one large group.”
 - “We met one time per month, but it was a long meeting.”
 - “There were not so many teams and not so many meetings.”
 - “There was always a lot of talk, but not a whole lot got done.”
 - “Everyone got a chance to speak what was on their mind, and everyone knew what was going on.”
 - “At one point Seekers and Shepherds were combined, but it was overwhelming – too many functional areas.”
-

MINISTRIES WE ARE CURRENTLY INVOLVED IN:

| | | |
|----------------------|--------------------|-----------------------|
| Advance Giving | Finance | Recording Secretary |
| Audio / Video on | Food Collections | Servant Evangelism |
| Sunday Bulletin Prep | Greeters | Small Groups |
| Caring / Visitation | Hospitality | Special Music |
| Church Meals | Junior Church | Special Services |
| Child Care | Lay Leader | S/PPRC |
| Communications | Lay Member to AC | Sunday School |
| Community Meals | Lay Speaking | Treasurer |
| Community Outreach | Nominations | Trustees |
| Crossroads Ladies | Nurture | UMW |
| Disaster Response | Liturgists | Ushers |
| Disciple Bible Study | Men's Group | Vacation Bible School |
| Emergency | Missionary Support | Visual Arts |
| Intervention | Hands on Missions | Website |
| Faith Development | Music Ministry | Worship |
| Christian Education | Newsletter | Worship Team |
| Family Fun Night | Parade of Lights | Youth Group |
| Fellowship | Prayer | |

During his report, Pastor Brian read from John 15 *"I am the true vine, and my Father is the gardener. He cuts off every branch in me that bears no fruit, while every branch that does bear fruit he prunes so that it will be even more fruitful."*

We need to prayerfully consider "Are there branches of our ministry that need to be cut off, and which need to be pruned?"

Are either of these options the best choice for Crossroads?

Option 1: "We had always done it that way..."

Option 2: Dazed and Confused (Current System)

(The consensus was that neither would be considered the best model)

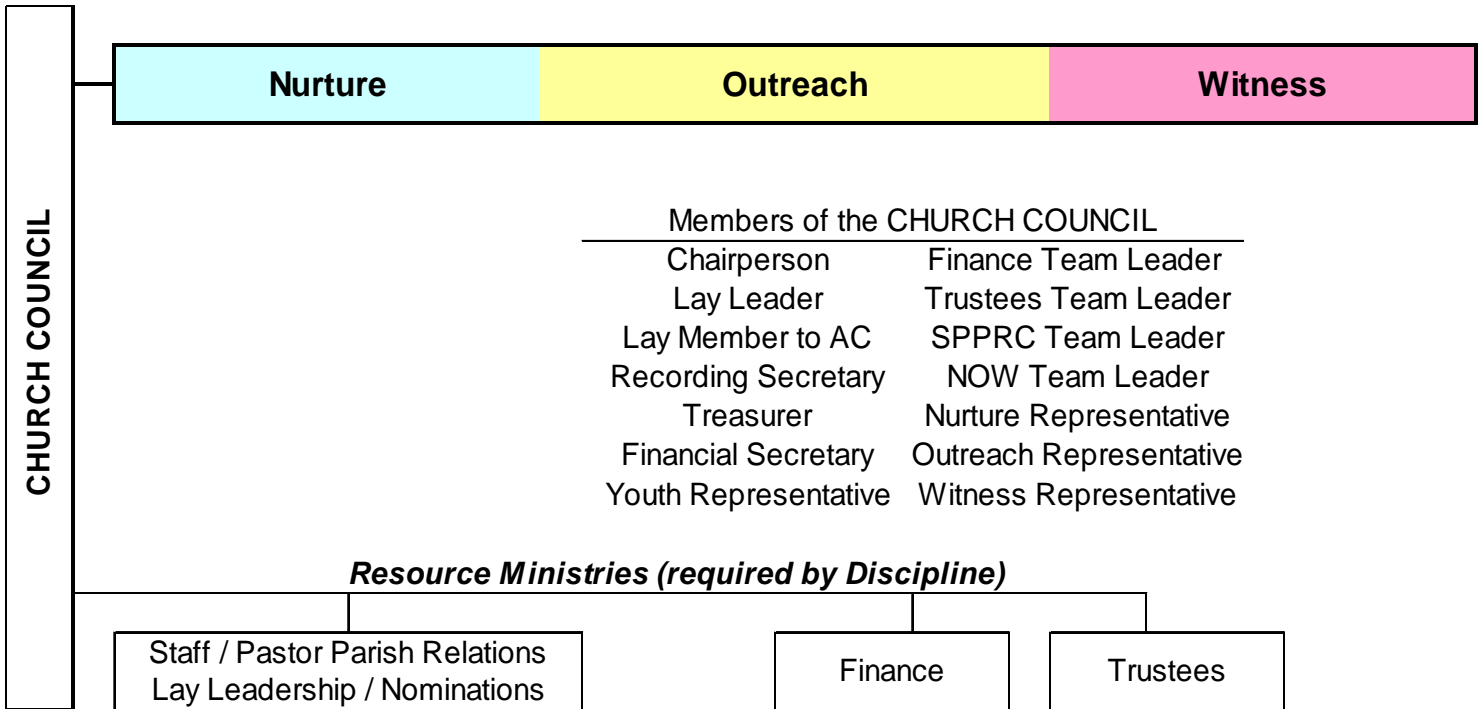
In order to be successful in our mission and ministry, we need a system to **effectively** and **intentionally** manage and administer the programs and ministries of Crossroads UMC NOW.

N.O.W. (rm)

NOW
Nurture
Outreach
Witness

(rm) Resource Ministries
S/PPRC
Finance
Trustees

What could our system look like?



Nurture

Audio / Video
 Bulletin Prep
 Caring / Visitation
 Church Meals
 Crossroads Ladies
 Disciple Bible Study
 Emmaus 4th Day
 Faith Development / CE
 Family Fun Night
 Fellowship / Nurture
 Greeters / Ushers
 Junior Church
 Liturgists
 Men's Group
 Other Small Groups
 Prayer
 Small Groups
 Special Music
 Special Services
 Sunday School
 Vacation Bible School
 Visual Arts
 Worship
 Youth Group

Outreach

Advance Giving
 Community Meals
 Community Outreach
 Disaster Response
 Emergency Intervention
 Food Collections
 Hospitality
 Jubilee Parade
 Missionary Support
 Missions
 Parade of Lights
 Servant Evangelism
 United Methodist Women

Witness

Lay Speaking
 Newsletter
 Website
 Communications

Staff / Pastor Parish Relations

At least 5, not more than 9 members

Elected for 3 years

Divided into 3 classes

"Retiring" members may not succeed themselves

One member must be a young adult

All team members must be church members

May not meet w/o Pastor or DS

Members are to include:

Mix of ages

Mix of genders

Lay Leader

Lay Member to AC

Lay Leadership / Nominations

All serving are members of the church

Elected for 3 years

Divided into 3 classes

Members are to include:

Mix of ages,
including youth

Mix of genders

Pastor – Chair

Lay Leader - Vice Chair

Finance Team

Consists of:

Team Leader elected annually
by the team

Church Council Chairperson

Lay Leader

Lay Member to AC

Treasurer

Financial Secretary

Trustee Representative

SPPRC Representative

Pastor - voice and vote

Any elected by Charge Conf.

Trustees

Not more than 9

Not fewer than 3 members

2/3 must be members

1/3 Lay Women & 1/3 Laymen

Team Leader elected annually
by the team

Team Leader must be a
church member

Elected for 3 years

Divided into 3 classes